

# ME2006

Average

Moins Facile

## MISSES' DRESSES

**Suggested Fabrics:** Cotton Blends, Stretch Wovens, Crepe, Velvet, Double Knit. **Interfacing:** Lightweight Fusible.

**Notions:** One pkg. of 1/2" (1.3cm) wide single fold bias tape, six 5/8" (1.5cm) buttons.

Sizes	8	10	12	14	16	18	20	22	24	26
European	34	36	38	40	42	44	46	48	50	52

### BODY MEASUREMENTS: Select pattern size based on body measurements

<b>Bust</b>	31½	32½	34	36	38	40	42	44	46	48	Ins.
<b>Waist</b>	24	25	26½	28	30	32	34	37	39	41	"
<b>Hip-9" below waist</b>	33½	34½	36	38	40	42	44	46	48	50	"
<b>Back-neck to waist</b>	15¾	16	16¼	16½	16¾	17	17¼	17½	17¾	18	"

<b>Dress A</b>	45"*	4¾	4¾	4½	4½	5	5	5½	5¼	5¼	5¾	Yds.
	60"*	3¾	3¾	3½	3½	3½	3½	4	4	4	4½	"

<b>Interfacing A - 20"</b>	1¾	1¾	1¾	2	2	2½	2½	2½	3	3	"
----------------------------	----	----	----	---	---	----	----	----	---	---	---

<b>Dress B</b>	45"*	3¾	3¾	3¼	3¼	3¼	3¾	3¾	3¾	3¾	Yds.
	60"*	2½	2½	2½	2½	2½	3	3	3	3	"

<b>Interfacing B - 20"</b>	1¾	1¾	1¾	1¾	1¾	1¾	2½	2½	2½	2½	"
----------------------------	----	----	----	----	----	----	----	----	----	----	---

### FINISHED GARMENT MEASUREMENTS (Includes Design and Wearing Ease)

<b>Bust</b>	35	36	37½	39½	41½	43½	45½	47½	49½	51½	Ins.
<b>Waist</b>	27	28	29½	31½	33½	35½	37½	39½	41½	43½	"

#### Width, lower edge

<b>Dress A</b>	83	84	85½	87½	89½	91½	93½	95½	97½	99½	Ins.
<b>Dress B</b>	78¾	79¾	81¼	83¼	85¼	87¼	89¼	91¼	93¼	95¼	"

#### Finished back length from base of neck

<b>Dress A</b>	40¾	41	41¼	41½	41¾	42	42¼	42½	42¾	43	Ins.
<b>Dress B</b>	33¾	34	34¼	34½	34¾	35	35¼	35½	35¾	36	"

## ROBES POUR JEUNES FEMMES

**Tissus Conseillés:** Cotonnades, Tissus Tissés Extensibles, Crêpe, Velour, Tricot double. **Entoilage:** Thermocollant léger.

**Mercerie:** 1 paquet de ruban de biais simple de 1.3cm de large, 6 boutons de 1.5cm.

Tailles	8	10	12	14	16	18	20	22	24	26
Françaises	36	38	40	42	44	46	48	50	52	54
Européen	34	36	38	40	42	44	46	48	50	52

### MESURES DU CORPS: Choisissez la taille du patron basée sur les mesures du corps

<b>Poitrine</b>	80	83	87	92	97	102	107	112	117	122	cm
<b>Taille</b>	61	64	67	71	76	81	87	94	99	104	"

#### Hanches (23cm au-dessous de la taille)

	85	88	92	97	102	107	112	117	122	127	cm
<b>Dos du cou à la taille</b>	40	40.5	41.5	42	42.5	43	44	44.5	45	46	"

<b>Dress A</b>	115cm*	4.0	4.0	4.2	4.2	4.6	4.6	4.7	4.8	4.8	5.0	m
	150cm*	3.1	3.1	3.1	3.2	3.2	3.2	3.6	3.7	3.7	3.7	"

<b>Interfacing A - 51cm</b>	1.8	1.8	1.8	1.9	1.9	2.6	2.7	2.7	2.7	2.8	"
-----------------------------	-----	-----	-----	-----	-----	-----	-----	-----	-----	-----	---

<b>Dress B</b>	115cm*	2.9	2.9	2.9	3.0	3.0	3.0	3.5	3.5	3.6	3.6	m
	150cm*	2.3	2.3	2.3	2.3	2.3	2.4	2.8	2.8	2.8	2.8	"

<b>Interfacing B - 51cm</b>	1.5	1.6	1.6	1.6	1.6	1.6	2.3	2.3	2.3	2.4	"
-----------------------------	-----	-----	-----	-----	-----	-----	-----	-----	-----	-----	---

### MESURES DES VÊTEMENTS FINI (Motif et aisance de port compris)

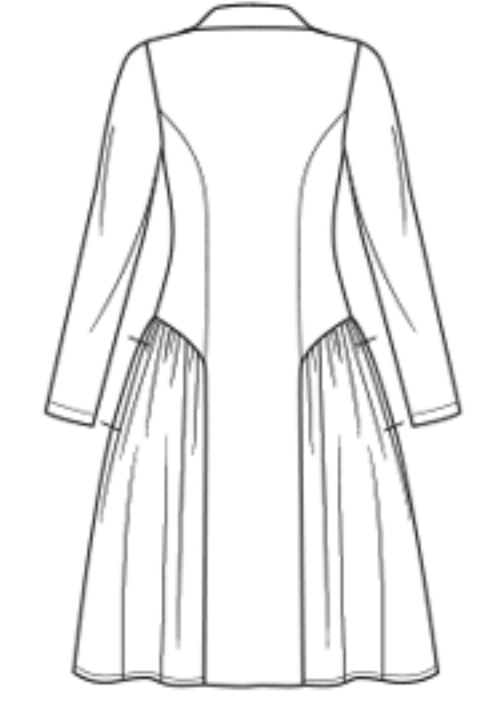
<b>Poitrine</b>	89	92	95	101	106	111	116	121	126	131	cm
<b>Taille</b>	69	71	75	80	85	90	95	101	106	111	"

#### Largeur à l'ourlet

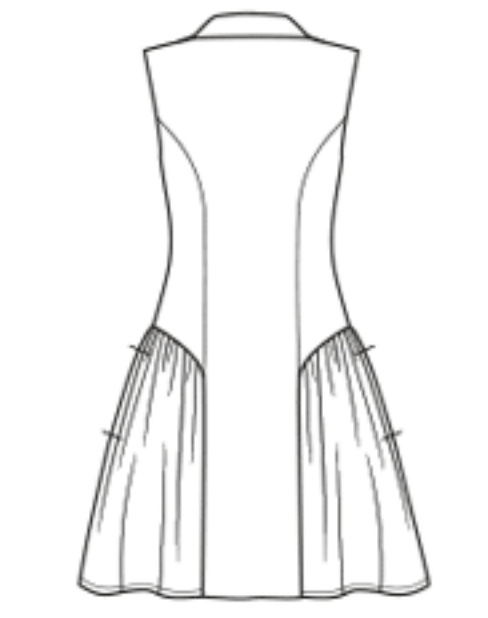
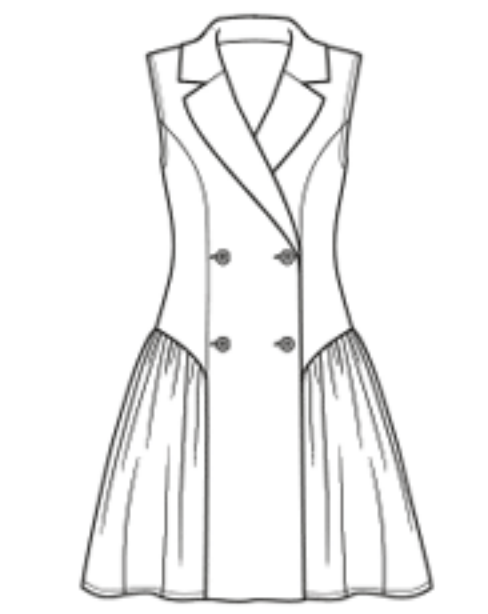
<b>Robe A</b>	211	214	217	222	227	233	237	242	248	253	cm
<b>Robe B</b>	200	203	207	212	217	221	227	233	237	242	"

#### Longueur finie - dos, votre nuque à l'ourlet

<b>Robe A</b>	104	104	105	106	106	107	107	108	109	110	cm
<b>Robe B</b>	86	86.5	87	87.5	88.5	89	89.5	90	91	91.5	"



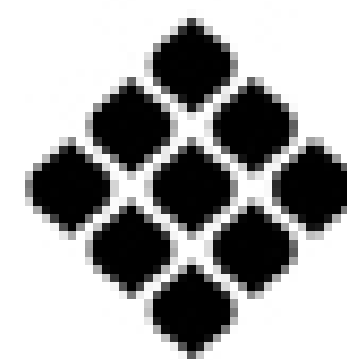
A



B

\*\*without nap \*with nap

\*sans sens \*\*avec sens \*\*\*avec ou sans sens



# Textielstad

sinds 1930