

ME2004

Average

Moins Facile

MISSES' JACKET, PANTS AND SKIRT

Suggested Fabrics: Cotton Blends, Linen Blends, Taffeta, Polyester Blends, Nylon Blends, Ponte, Double Knit. **Contrast A:** Rib Knit. **Lining:** Lining Fabric. **Interfacing:** Lightweight Fusible.

Notions: A,B,C: ½" - ¾" (1.3cm - 2cm) wide grommets: Twelve for A, four for B,C, ½" - ¾" (1.3cm - 2cm) wide purchased ties: 2¼ yds. (2.1m) for A, 1¾ yd. (1.3m) for B,C. **Also for A:** One 16" (40cm) separating zipper (cut to fit), one pkg. of ½" (1.3cm) wide extra-wide double-fold bias tape. **Also for B,C:** One 9" (23cm) invisible zipper.

Sizes	8	10	12	14	16	18	20	22	24	26
European	34	36	38	40	42	44	46	48	50	52

BODY MEASUREMENTS: Select pattern size based on body measurements

Bust	31½	32½	34	36	38	40	42	44	46	48	Ins.
Waist	24	25	26½	28	30	32	34	37	39	41	"
Hip-9" below waist	33½	34½	36	38	40	42	44	46	48	50	"
Back-neck to waist	15¾	16	16¼	16½	16¾	17	17¼	17½	17¾	18	"

Jacket A	45**	1¾	1¾	1¾	1¾	1¾	1¾	1¾	1¾	1¾	Yds.
	60**	1¾	1¾	1¾	1¾	1¾	1¾	1½	1½	1½	"

Contrast - 20" tubular or 40" flat - ½ yd.

Lining	45***	¾	¾	¾	¾	¾	¾	¾	¾	¾	Yd.
Interfacing	20"	¼	¼	¼	¼	¼	¼	¼	¼	¼	"

Interfacing B,C	20"	¾	¾	¾	¾	¾	¾	¾	¾	¾	Yds.
-----------------	-----	---	---	---	---	---	---	---	---	---	------

Pants B	45**	2¼	2¼	2¼	2¾	3	3	3	3	3	Yds.
	60**	1¾	1¾	1¾	1¾	1¾	1¾	2½	2½	2¼	"

Skirt C	45**	1¼	1¼	1¼	1¼	1¼	1¼	1¼	1¼	1¼	Yds.
	60**	1¾	1¾	1¾	1¾	1¾	1¾	1¾	1¾	1¾	"

FINISHED GARMENT MEASUREMENTS (Includes Design and Wearing Ease)

A Bust	36½	37½	39	41	43	45	47	49	51	53	Ins.
B,C Waist	25½	26½	28	30	32	34	36	38	40	42	"
B,C Hip	36	37	38½	40½	42½	44½	46½	48½	50½	52½	"
B Width, each leg	17½	18	18½	19	19½	20	20½	21	21½	22	"
C Width, lower edge	35½	36½	38	40	42	44	46	48	50	52	"
Finished back length from base of neck											
Jacket A	15¾	16	16¼	16½	16¾	17	17¼	17½	17¾	18	Ins.
Finished side length from waist											
Pants B	40	40	40	40	40	40	40	40	40	40	Ins.
Finished back length from waist											
Skirt C	20	20	20	20	20	20	20	20	20	20	Ins.

*with nap **without nap ***with or without nap

VESTE, PANTALON ET JUPE POUR JEUNES FEMMES

Tissus Conseillés: Cotonnades, Lin mélangé, Taffetas, Mélanges de polyester, Mélanges de nylon, Tricot ponte, Tricot double. **Contraste A:** Tricot à côtes. **Doubleure:** Tissu à doubleure. **Entoilage:** Thermocollant léger.

Mercerie: oeillets de 1.3cm - 2cm de large: 12 pour A, 4 pour B,C, attaches achetées de 1.3cm à 2cm de large: 2.1m pour A, 1.3m pour B,C. **Aussi pour A:** 1 fermeture à glissière séparable de 40cm (coupée pour ajuster), 1 paquet de ruban de 1.3cm de large biais double de extra large. **Aussi pour B,C:** 1 fermeture à glissière invisible de 23cm.

Tailles	8	10	12	14	16	18	20	22	24	26
Françaises	36	38	40	42	44	46	48	50	52	54
Européen	34	36	38	40	42	44	46	48	50	52

MESURES DU CORPS: Choisissez la taille du patron basée sur les mesures du corps

Poitrine	80	83	87	92	97	102	107	112	117	122	cm
Taille	61	64	67	71	76	81	87	94	99	104	"
Hanches (23cm au-dessous de la taille)	85	88	92	97	102	107	112	117	122	127	cm

Dos du cou à la taille	40	40.5	41.5	42	42.5	43	44	44.5	45	46	"
------------------------	----	------	------	----	------	----	----	------	----	----	---

Veste A	115cm*	1.6	1.6	1.6	1.6	1.8	1.8	1.8	1.8	1.8	m
	150cm*	1.3	1.3	1.3	1.3	1.3	1.3	1.3	1.4	1.4	"

Contraste 51cm tubulaire ou 102cm plat - 0.5m

Doubleure	115cm**	0.6	0.6	0.6	0.6	0.6	0.7	0.7	0.8	0.8	m
-----------	---------	-----	-----	-----	-----	-----	-----	-----	-----	-----	---

Entoilage	51cm	0.3	0.3	0.3	0.3	0.3	0.3	0.3	0.7	0.7	"
-----------	------	-----	-----	-----	-----	-----	-----	-----	-----	-----	---

Entoilage B,C	51cm	0.4	0.4	0.4	0.4	0.4	0.4	0.7	0.7	0.7	m
---------------	------	-----	-----	-----	-----	-----	-----	-----	-----	-----	---

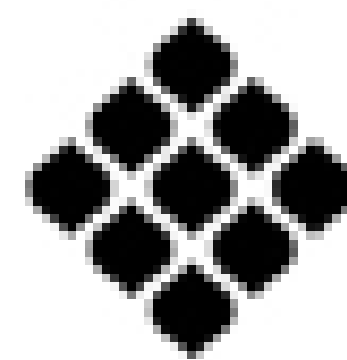
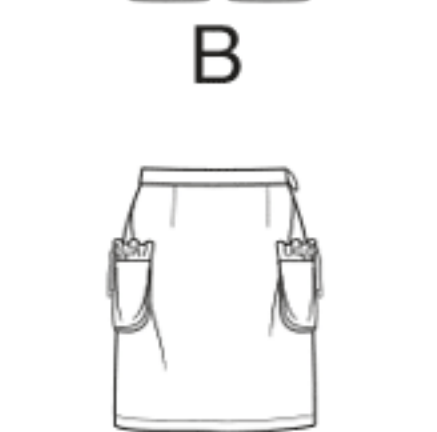
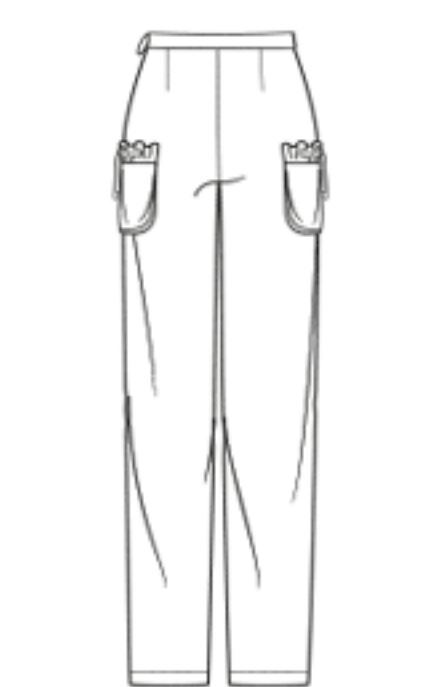
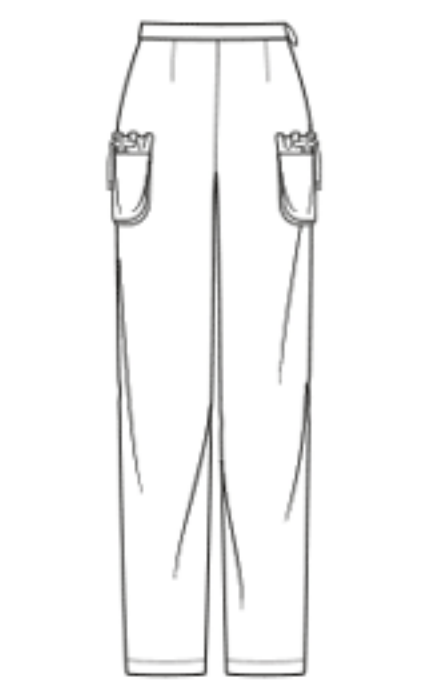
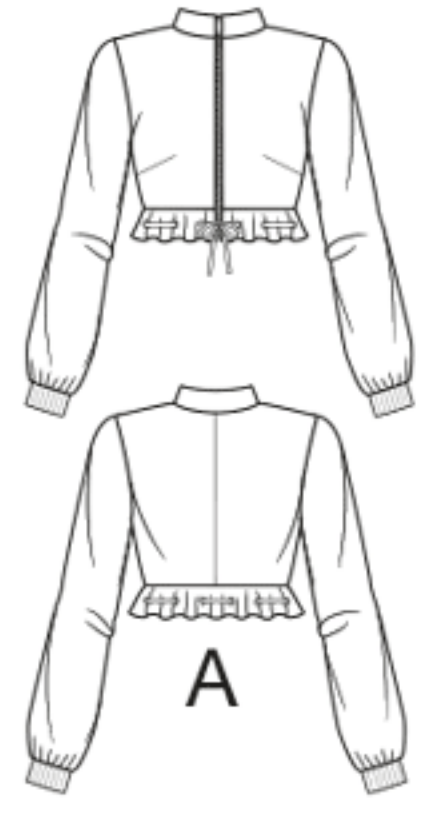
Pantalon B	115cm*	2.1	2.1	2.1	2.2	2.3	2.8	2.8	2.8	2.8	m
	150cm*	1.4	1.4	1.5	1.5	1.5	1.6	2.0	2.0	2.1	"

Jupe C	115cm*	1.2	1.2	1.2	1.2	1.2	1.6	1.6	1.6	1.6	m
	150cm*	1.1	1.1	1.1	1.1	1.1	1.1	1.1	1.1	1.1	"

MESURES DES VÊTEMENTS FINI (Motif et aisance de port compris)

A Poitrine	93	95	99	104	109	115	121	126	131	135	cm
B,C Taille	65	67	71	76	81	86	91	96	101	107	"
B,C Hanches	92	94	98	103	108	113	118	123	128	132	"
B Largeur, chaque jambe	44.5	45.5	47	48.5	49.5	51	52	53.5	54.5	56	"
C Largeur à l'ourlet	90	92.5	96.5	102	107	112	117	122	127	132	"
Longueur finie - dos, votre nuque à l'ourlet											
Veste A	40	40.5	41.5	42	42.5	43	44	44.5	45	45.5	cm
Longueur finie - côté, taille à l'ourlet											
Pantalon B	102	102	102	102	102	102	102	102	102	102	cm
Longueur finie - dos, taille à l'ourlet											
Jupe C	51	51	51	51	51	51	51	51	51	51	cm

*avec sens **sans sens ***avec ou sans sens



Textielstad

sinds 1930